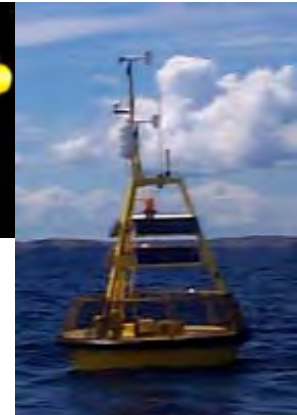
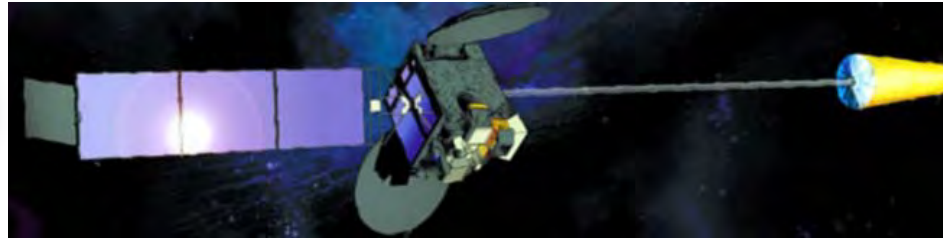


Discovering Natural Hazards

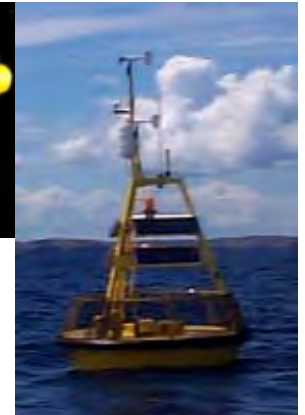
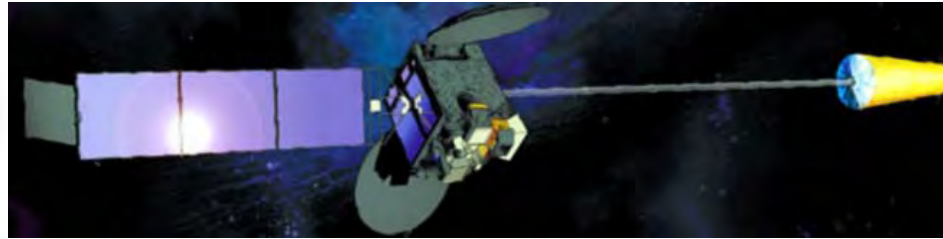
- before they impact

John Nairn
Supervising Meteorologist
South Australia



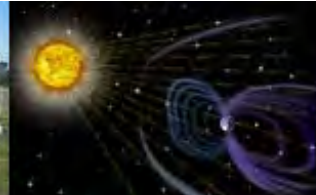
Bureau of Meteorology warning services:

- Severe weather (wind, rain and storm surge);
- Severe thunderstorms (wind, rain, large hail and tornadoes);
- Ocean and coastal marine winds (strong, gale, storm and hurricane);
- Fire Weather Warning (CFS Total Fire Bans);
- Agriculture and pastoralists (advice for frost, downy mildew, barley and sheep graziers);
- Aviation (airport warning, ditching report, search and rescue);



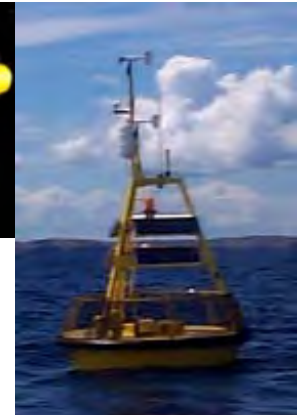
- Flood;
- Motorists (road weather alert);
- Heat Wave;
- Tsunami;
- Drought;
- Space – ionosphere;
- Animal and plant disease outbreaks (foot in mouth); and
- Release of hazardous materials (HAZMAT and CBRN).

Elaborate briefings are also provided to media and emergency services + Commercial services.





1905-2005
**100 YEARS OF
 SCIENCE AND SERVICE**
BUREAU OF METEOROLOGY



Bureau of Meteorology, www.bom.gov.au



Home | About Us | Contacts | Help | Feedback

Australian Government
Bureau of Meteorology

SEARCH

Global | Australia | NSW | Vic. | Qld | WA | SA | Tas. | ACT | NT | Ant. |

Weather & Warnings | Hydrology | Climate | Numerical Prediction | About Services | Learn About Meteorology | Registered User Services |

All Services
Product types and access.

Weather Services
Forecasts, warnings and latest weather observations. Numerical Weather Prediction.

Climate Services
Climate data, prediction, analysis and information products.

Hydrology Services
Flood warning, water resources, and hydrometeorological services.

Ocean Services
Tides, ocean conditions, and tsunamis.

Water and the Land

NEW Water Information

Tsunami Warning Centre

Marine Services

Registered User Services

SILO

Aviation Services

Defence Services

SSU Special Services Unit

WARNINGS CURRENT:

NSWACT VIC QLD WA SA TAS

Forecast for Friday

Sydney 22° Shower or two.
 Melbourne 19° Sunny.
 Brisbane 30° Mostly fine
 Perth 36° Fine. Hot.
 Adelaide 25° Fine. Sunny.
 Hobart 19° Fine.
 Canberra 25° Fine, partly cloudy.
 Darwin 34° Late shower about.

Latest Weather

°C Rain since 9 am

Sydney 25° 0.0 mm
 Melbourne 23° 0.0 mm
 Brisbane 28° 0.0 mm
 Perth 26° 0.0 mm
 Adelaide 23° 0.0 mm
 Hobart 17° 0.0 mm
 Canberra 27° 0.0 mm
 Darwin 31° 0.2 mm

Go to weather for...
or Click map, to link to weather area

26 MAR 09 05:30 UTC

Radar Satellite Charts

This month's feature
Potential frost days.
(Previous features)

Service Announcements
Changes to routine services.

News

- Latest Media Release
- Seasonal Outlooks for April-June
- Bureau of Meteorology Field Days
- Thunderstorm in SE Queensland

More media releases >>

Quarterly focus
Governor Phillip cops an El Niño

Climate Change
Observed changes in the Australian and global climate

About Meteorology

- Learn About Meteorology
- Indigenous Weather Knowledge
- Publications
- Library

About Us

- Contact Information
- Business Entry Point
- Research (CAWCR)
- WMO Activities
- Careers

Dept. of the Environment, Water, Heritage and the Arts
 Legislation | Budget Papers | Federal Government | Prime Minister | Ministers

Home | About Us | Learn about Meteorology | Contacts | Search | Help | Feedback
 Weather and Warnings | Climate | Hydrology | Numerical Prediction | About Services | Registered Users | SILO



South Australian Weather and Warnings

After 'clicking'
on map of SA

Warnings for South Australia

Warnings current:

- [Coastal Wind Warning 1](#).
- [Ocean Wind Warning](#).

Forecasts

- [All South Australian Forecasts](#)
- [Adelaide Forecast](#)

Weather Observations

- [All Latest South Australian Weather Observations](#)
- [Radar Images](#) (Rainfall location and intensity)
 - [Adelaide](#)
- [Satellite Imagery](#)
 - [Latest Visible image](#)
 - [Latest Infrared image](#)

Marine Weather Information

- [Marine services](#)

Flood Warnings, Rainfall and River Information

- [South Australian Flood Warning Centre](#)

Agricultural Weather Information

- [Water and the Land](#)

National Weather Charts

- [Current and Forecast National Weather Charts](#)

Climate Information

- [South Australian Climate Averages](#)
- [Southeastern Australia Seasonal Rainfall Outlook](#)
- [Southeastern Australia Seasonal Temperature Outlook](#)
- [Other Climate Information](#)

Field Offices

- [Ceduna Met Office](#)
- [Giles Met Office](#)
- [Mt Gambier Met Office](#)
- [Woomera Met Office](#)

Other Information

- [South Australian Media Releases](#)
- [Severe Weather Events](#)
- [About Warning Services](#)
- [Graphical Warnings - Severe Thunderstorms - Severe Weather](#)
- [History of Floods in SA](#)
- [Map of SA Agricultural Areas](#)
- [Weather Services Performance](#)

Learning

- [Forecasting the Weather: How to do it](#)
- [Weather Words](#)
- [History of Meteorology in South Australia](#)
- [History of the Adelaide Observatory](#)

Related Services

- [Weather By Fax Directories](#)
- [Telephone Weather Services Directory](#)
-

**Australian Government Bureau of Meteorology
South Australia Regional Office**

**TOP PRIORITY FOR IMMEDIATE BROADCAST
SEVERE WEATHER WARNING
for DAMAGING WINDS AND FLASH FLOODING**

For people in the Adelaide and Mount Lofty Ranges, Lower Eyre Peninsula, Kangaroo Island, Yorke Peninsula, Mid North, Riverland, Murraylands, Upper South East and parts of the Eastern Eyre Peninsula districts.

Issued at 1:45 pm Thursday, 28 June 2007.

A small but deep low just south of Kangaroo Island is moving slowly eastwards. The low is expected to cross the Coorong coast tonight, then weaken as it moves further inland towards the Victorian border.

West to southwest winds, averaging 50-70 km/h with peak gusts to 120 km/h are already affecting parts of Eyre and Yorke Peninsulas and these damaging winds are expected to spread across the warning area during this afternoon. The winds should start easing after midnight.

Locations which may be affected include Adelaide, Port Lincoln, Maitland, Murray Bridge and Victor Harbor.

Areas of rain and showers are occurring across the southern half of the state. The rain is forecast to become heavy later this afternoon in the Mid North and Mount Lofty Ranges, especially on and along the western slopes of the ranges. Rainfall totals of 100-150 mm are possible and this may cause flash flooding.

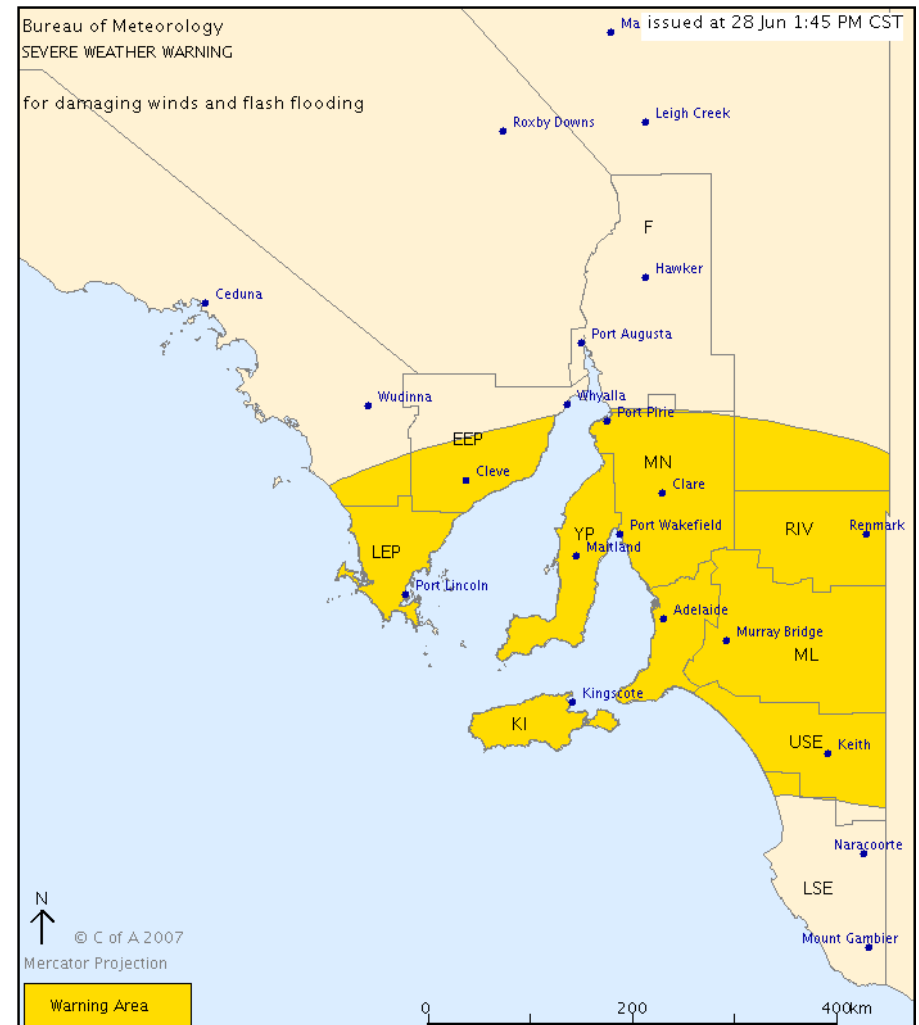
The State Emergency Service advises that people should:

- * Move vehicles under cover or away from trees
- * Secure or put away loose items around your property.
- * Don't drive, ride or walk through flood water.
- * Keep clear of creeks and storm drains.
- * Stay indoors, away from windows, while conditions are severe.

The next warning is due to be issued by 4:45 pm.

Warnings are also available through TV and radio broadcasts, the Bureau's website at www.bom.gov.au or by calling 1300 659 215. The Bureau and State Emergency Service would appreciate warnings being broadcast regularly.

Severe Weather Warnings



**Australian Government Bureau of Meteorology
South Australia Regional Office**

Severe Thunderstorm Warnings

**TOP PRIORITY FOR IMMEDIATE BROADCAST
SEVERE THUNDERSTORM WARNING - ADELAIDE
REGION**

for FLASH FLOODING and DAMAGING WIND

For people in the Playford, Gawler and parts of the Metropolitan and Adelaide Hills councils.

Issued at 4:53 pm Tuesday, 26 June 2007.

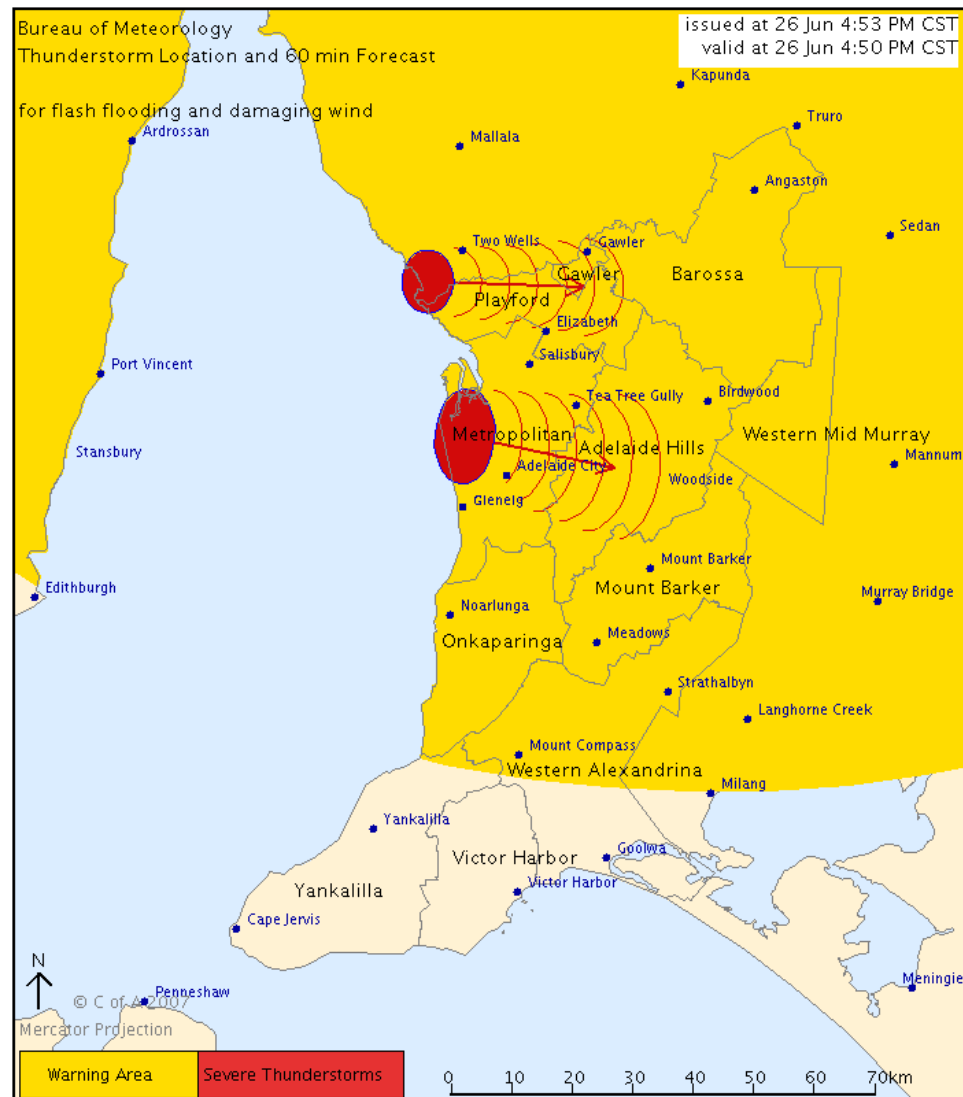
The Bureau of Meteorology warns that, at 4:50 pm, severe thunderstorms were detected on weather radar near Port Adelaide and Two Wells. These thunderstorms are moving towards the east. They are forecast to affect Adelaide City, Tea Tree Gully and Modbury by 5:20 pm and Elizabeth, Gawler and Woodside by 5:50 pm. Very heavy rain, flash flooding and damaging winds are likely.

The State Emergency Service advises that people should:

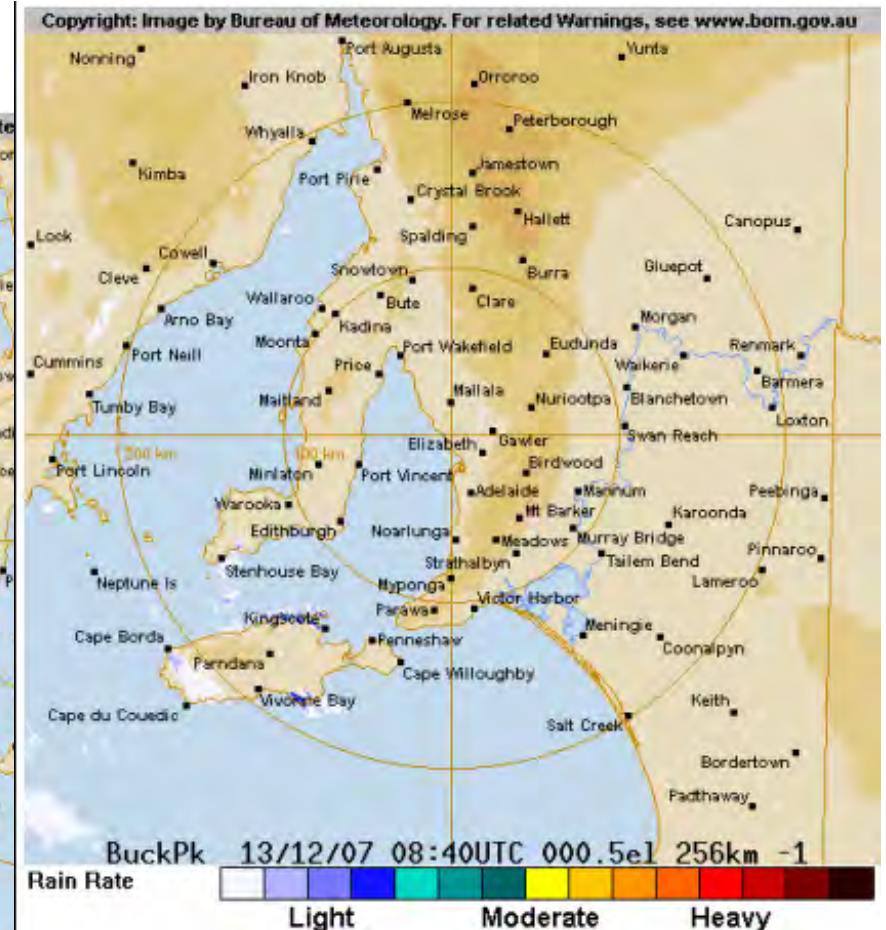
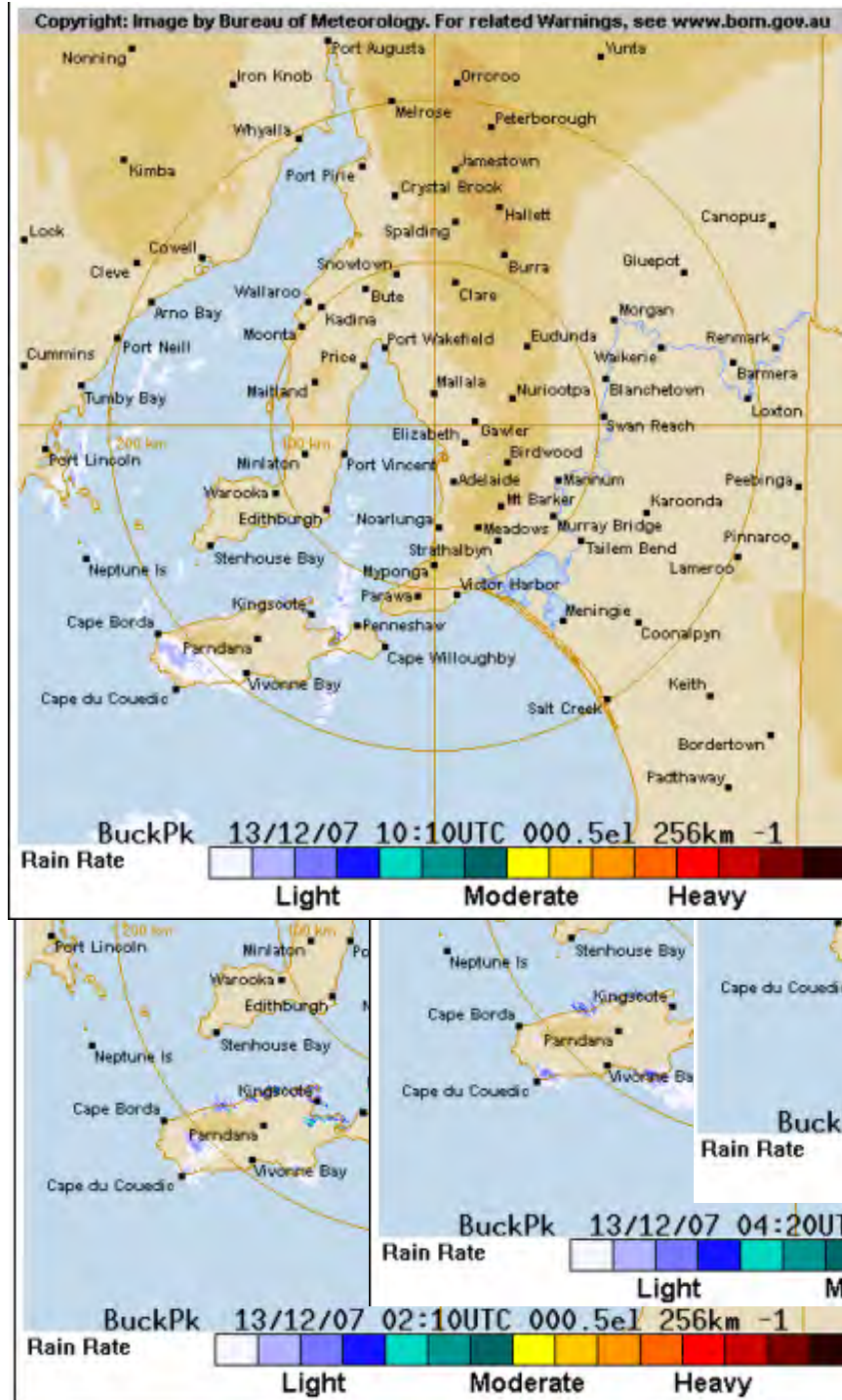
- * Secure or put away loose items around your property.
- * Keep clear of fallen power lines.
- * Don't drive, ride or walk through flood water.
- * Keep clear of creeks and storm drains.
- * Stay indoors, away from windows, while storms are nearby.

The next warning is due to be issued by 5:50 pm.

Warnings are also available through TV and radio broadcasts, the Bureau's website at www.bom.gov.au or by calling 1300 659 215. The Bureau and State Emergency Service would appreciate warnings being broadcast regularly.



Radar and fires



NexGenFWS

Federal Government Budget Initiative:

Roll out Next Generation Forecast and Warning System over next 5 years. Start up in SA within 12 to 18 months.

But what does that mean?

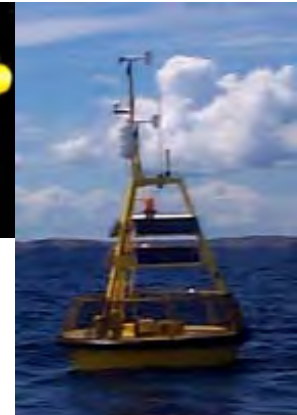
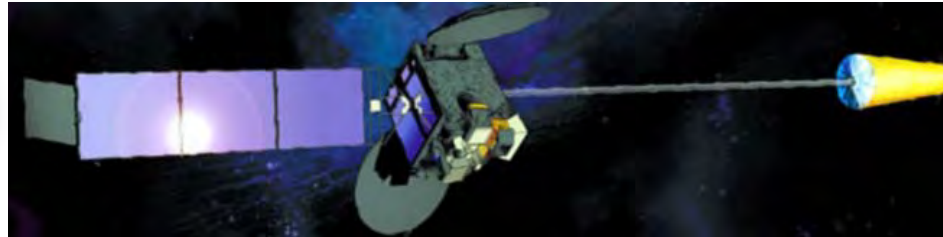
7 day worded forecasts for 650 localities (nationally);
for most recognised towns and cities.

Graphical access (Forecast Explorer) to forecast and warning parameters via Internet, with point and click access to 7 day precis forecasts.

Retirement of legacy systems including replacement of multiple data viewing platforms with one integrated data viewer



1905-2005
100 YEARS OF
SCIENCE AND SERVICE
BUREAU OF METEOROLOGY



Next Generation Forecast and Warning System Exemplified by [US NWS](#)

National Oceanic and Atmospheric Administration's
National Weather Service

Site Map News Organization Search [] NWS All NOAA Go

Local forecast by "City, St" [] Go

XML RSS Feeds

Warnings Current By State/County... UV Alerts

Observations Radar Satellite Snow Cover Surface Weather... Observed Precip

Forecasts Local Graphical Aviation Marine Hurricanes Severe Weather Fire Weather

Text Messages By State By Message Type National

Forecast Models Numerical Models Statistical Models... MOS Prod GFS-LAMP Prod

Climate Past Weather Predictions Weather Safety Weather Radio Hazard Assmt... StormReady / TsunamiReady Skywarn™

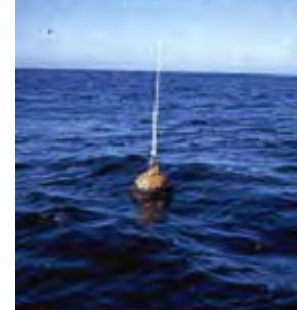
...Major Flooding in eastern North Dakota and northwestern Minnesota...
Flooding continues over eastern North Dakota and northwest Minnesota. Additional snow and rain from the current storm will exacerbate flooding conditions. Major to record flooding is expected on parts of the Red River and its tributaries around late March into early April. Details...

Warnings & Forecasts Graphical Forecasts National Maps Radar Water Air Quality Satellite Climate

Warnings By State [] Go Click Below To Zoom In. Tabs At A Glance

Created: 03/26/09 at 05:133 UTC

Tornado Warning	Red Flag Warning	Blizzard Watch
Severe Thunderstorm Warning	Winter Weather Advisory	Winter Storm Watch
Blizzard Warning	Wind Chill Advisory	Flood Watch
Winter Storm Warning	Flood Advisory	High Wind Watch
High Wind Warning	High Surf Advisory	Fire Weather Watch
Storm Warning	Heavy Freezing Spray Warning	Coastal Flood Statement
Avalanche Warning	Small Craft Advisory	Special Weather Statement
Tornado Watch	Brisk Wind Advisory	Marine Weather Statement
Flash Flood Watch	Dense Fog Advisory	Hazardous Weather Outlook
Severe Weather Statement	Lake Wind Advisory	Short Term Forecast
Flood Warning	Wind Advisory	
Gale Warning	Air Quality Alert	



New product protocols and types

RSS feeds

CAP

GIS

Internet presentations